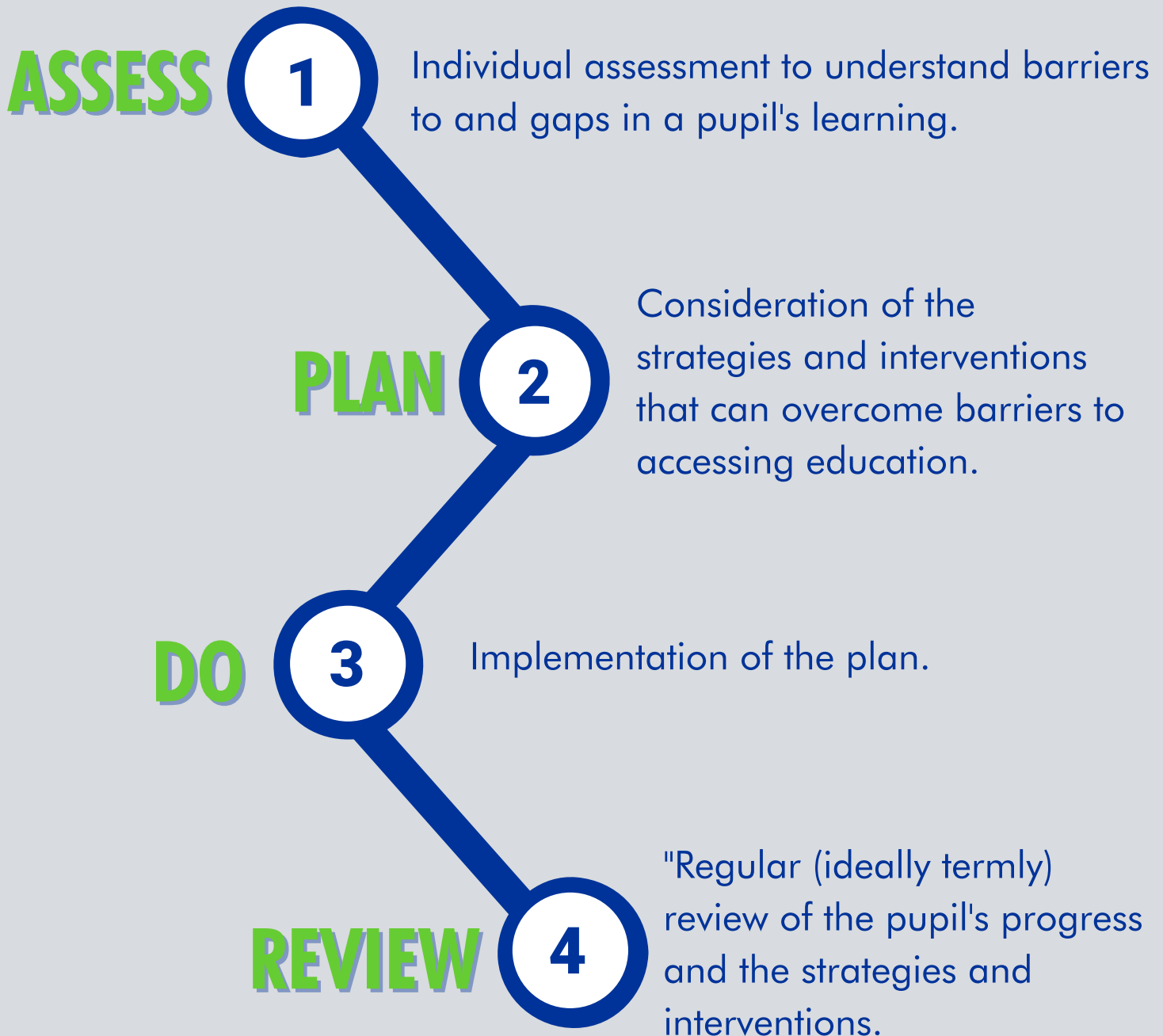


"Early intervention to address underlying causes of disruptive behaviour should include an assessment of whether appropriate provision is in place to support any SEN or disability that a pupil may have..."

SEN support four stages of the cycle:



Remember: Each autistic pupil is an individual and what works for one child/young person may not work for another.

You can find further information on different aspects of exclusion and how to understand how to support autistic pupils in our series of downloadable resources: <https://www.autismeducationtrust.org.uk/exclusions>