

Strategic Support for Local Authorities

Personalised help with every aspect
of your autism education provision

autismeducationtrust.org.uk



Supported by:



Department
for Education



The Autism Education Trust (AET) Strategic Offer



We offer a range of strategic support for our local authority partners who want to secure positive education for all autistic children and young people.



In addition to the support offered as part of your AET all phases licence, we can help you to review your current strategies or develop new ones that help you manage the demand on specialist services and the associated costs.



We can support you to analyse and map current and future needs including the changing expectations of parents.



We can assist you in forecasting the education provision you will require in the future.



We can facilitate working with the education providers in your area to shape future provision.

A new approach to managing demand - Mainstream Plus

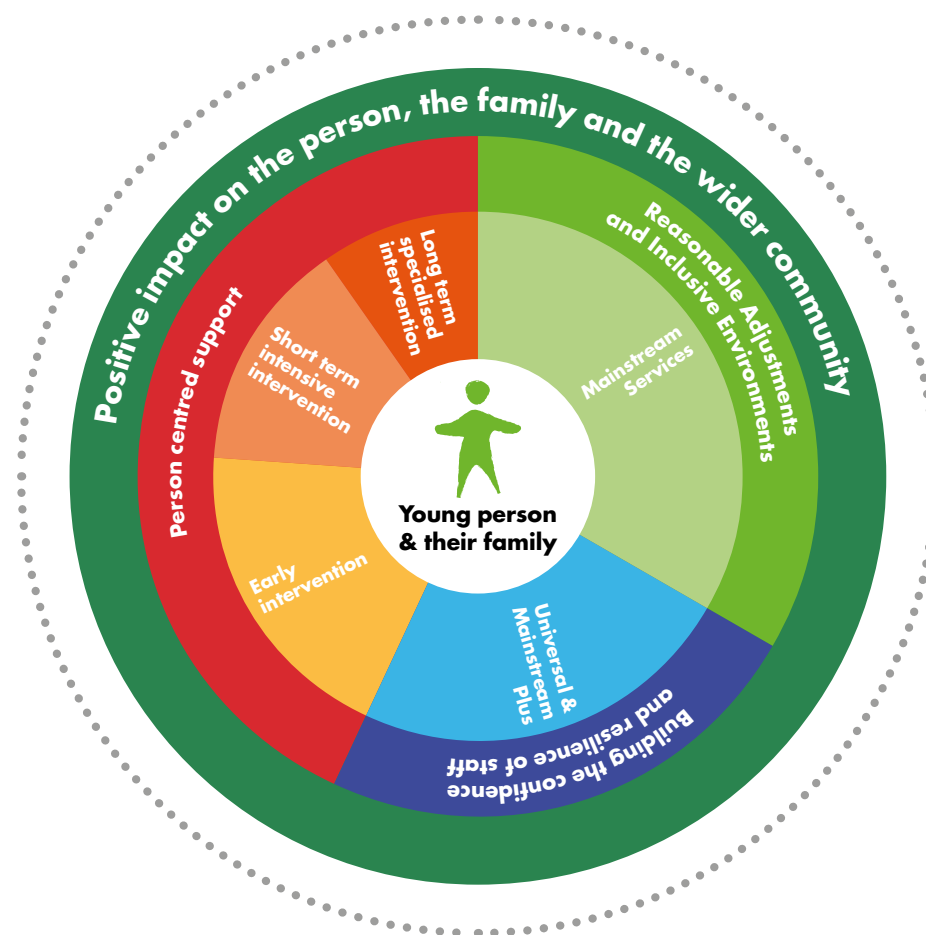
Our strategic support is based upon our model for mainstream plus aimed at managing the demand on specialist services. Managing demand requires a focus on working with whole settings to change culture and upskill the workforce so that they have the confidence and resilience to support and educate autistic children and young people in a sustainable way.

Using the **Institute of Public Care's whole-system commissioning model*** we have created a new approach to managing demand through investing in a mainstream plus approach.

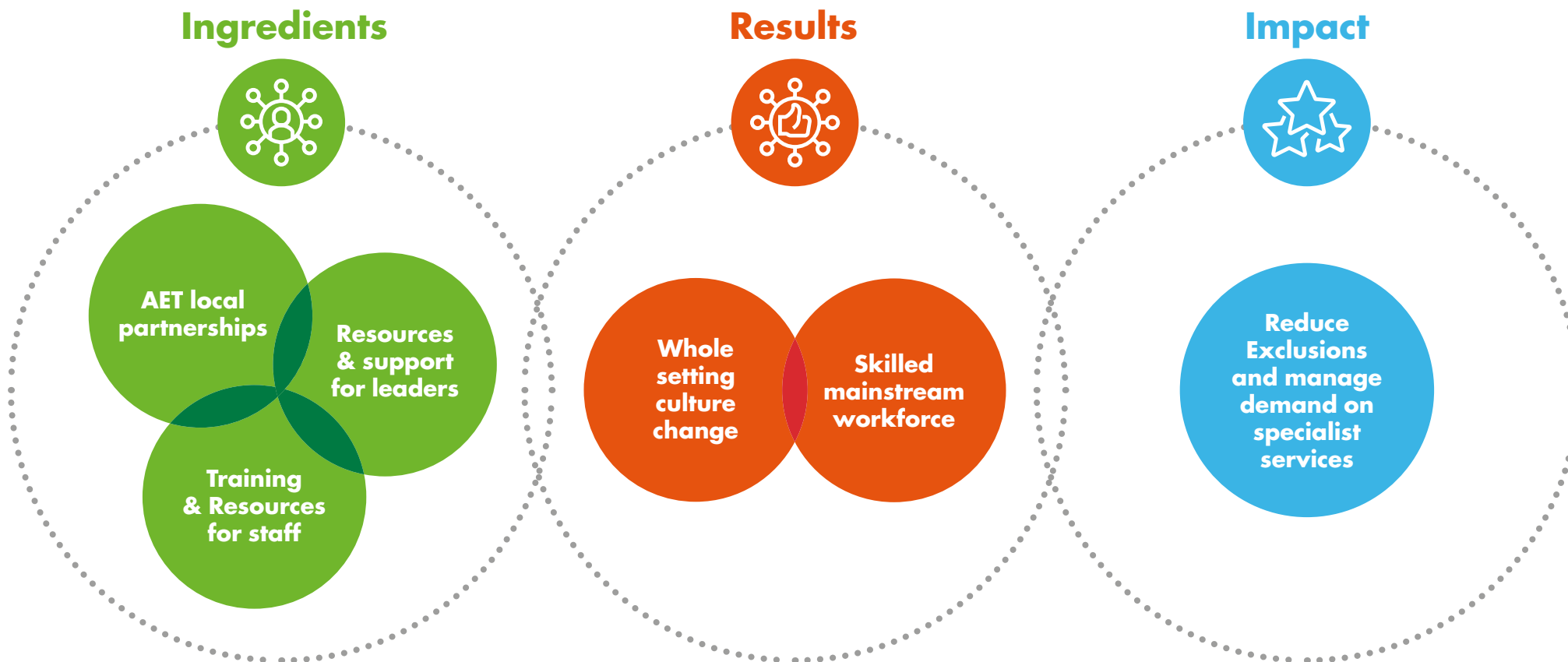
The AET provides a framework that can be used to change culture within education settings and across the local authority by providing training, ongoing support and an approach to managing demand for top up funding and Education and Health Care Plans. Embedding the **AET Programme creates a mainstream workforce who are skilled and confident, and local mainstream settings that are resilient enough to educate the local population of autistic children and young people.** The skill, confidence and resilience in mainstream settings **reduces the demand on specialist services, helps to prevent exclusions and decreases the associated costs.** It enables autistic children and young people to remain in mainstream settings close to home, experience a good education and achieve their learning potential.

At the AET we understand what good practice is. We know the importance of analysing the information so that solutions are evidence-based and address the challenges you have locally. We believe that culture change is possible when we work with the leaders of whole systems to increase and develop the knowledge and skills of the workforce and embed positive attitudes about autism and neurodiversity more generally.

Institute of Public Care's Whole-system Commissioning Model



Mainstream Plus Delivery Model



Contact us

If you would like our support with reviewing or developing your strategies please contact one of our Programme Managers who will **arrange an initial conversation with you to explore your needs further.**

London, South East and South West: Lyn Byatt
[**lyn.byatt@autismeducationtrust.org.uk**](mailto:lyn.byatt@autismeducationtrust.org.uk)

North and East: Lisa Downs
[**lisa.downs@autismeducationtrust.org.uk**](mailto:lisa.downs@autismeducationtrust.org.uk)

[**autismeducationtrust.org.uk**](http://autismeducationtrust.org.uk)

Supported by:



Department
for Education

